

*Tenda*



# RH9-WCA

6MP Dual-Lens Linkage Outdoor Wi-Fi Pan/Tilt Camera



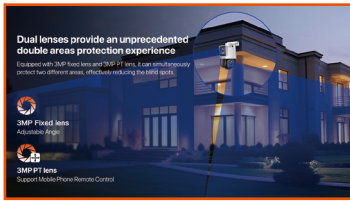
# RH9-WCA

## 6MP Dual-Lens Linkage Outdoor Wi-Fi Pan/Tilt Camera

### Product Description

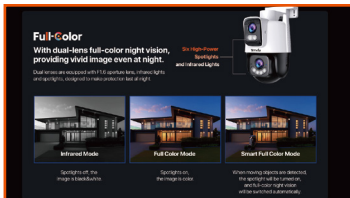
The dual-lens linkage outdoor Wi-Fi pan/tilt camera RH9-WCA, is a high-performance outdoor security camera that integrates 6MP resolution video(3MP+3MP), 360° visual coverage, full-color night vision, full-duplex two-way audio, human detection, vehicle detection, line crossing detection, intrusion detection, dual-lens smart linkage, sound and light alarm functions. The product is mostly used for outdoor protect scenarios such as courtyard, farms and shops, etc. The users can access the video via wireless or wired connection to the Internet.

# Product Features



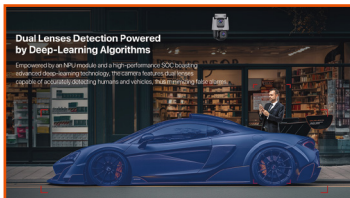
## Dual lenses provide an unprecedented double areas protection experience

Equipped with 3MP fixed lens and 3MP PT lens, it can simultaneously protect two different areas, effectively reducing the blind spots.



## With dual-lens full-color night vision, providing vivid image even at night.

Dual lenses are equipped with F1.6 aperture lens, infrared lights and spotlights, designed to make protection last all night.



## Dual Lenses Detection Powered by Deep-Learning Algorithms

Empowered by an NPU module and a high-performance SOC boasting advanced deep-learning technology, the camera features dual lenses capable of accurately detecting humans and vehicles, thus minimizing false alarms.



## Multiple Perimeter Protection, Focus More on the Key Areas

The dual-lens design enables precise line-crossing and intrusion detection. Upon detecting the human or vehicle presence within the monitored area, the camera promptly triggers both sound and light alerts, effectively deterring unwanted visitors.



## Dual lenses With different focal lengths provide comprehensive coverage from wide-angle to close-up shots.

The 4 mm wide-angle fixed lens safeguards broader areas, while the 6 mm telephoto PT lens delivers sharper details, including facial features and license plates.



## Dual-lens Linkage, Tracking Active Objects Automatically or Manually

Dual lenses linkage design coupled with advanced human tracking algorithms. When the fixed 4 mm wide-angle lens detects human activity, the PT lens with a 6 mm telephoto capability automatically locking onto the subject to meticulously record their movements.

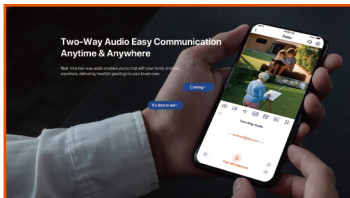
When previewing through the TDSEE APP, simply tap on any point within the fixed lens view, and watch as the PT lens swiftly pans to that precise location, delivering a detailed close-up perspective.

# Product Features



## Next-level Wi-Fi 6 Technology, Stable and Smooth Video

With the latest Wi-Fi 6 technology, built-in special antenna for signal enhancement, it offers better anti-interference performance and lower latency compared to Wi-Fi 4, allowing your security range wider.



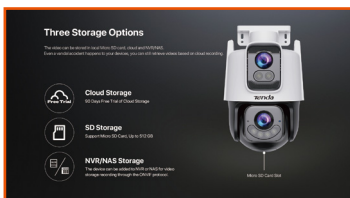
## Two-Way Audio Easy Communication Anytime & Anywhere

Real-time two-way audio enables you to chat with your family anytime, anywhere, delivering heartfelt greetings to your loved ones.



## Adjustable Brackets and Lenses, Convenient Installation

The fixed lens supports manual vertical adjustment up to 35°, while the bracket enables manual horizontal adjustment up to 260°, offering versatile installation options for nearly any location.



## Three Storage Options

The video can be stored in local Micro SD card, cloud and NVR/NAS. Even a vandal accident happens to your devices, you can still retrieve videos based on cloud recording.



## Sharing Camera to Your Family to Protect Safety Jointly

Enhance safety by sharing the camera with your family. Each member can monitor home situations and collaborate to ensure family security.



## Triple Encryption Ensures Data Security

Triple encryption protection is applied to data transmission, cloud storage, and account login to ensure the security of your security data and personal privacy.

# Specification

| Camera                       |   |
|------------------------------|---|
| Image Sensor                 | 1/3" Progressive Scan CMOS sensor   |
| Day & Night                  | ICR type  |
| Bracket Angle Adjustment     | Pan: 0° to 260°   |
| Lens                         |   |
| Focal Length                 | Fixed Lens: 4mm<br>PT Lens: 6mm   |
| Aperture                     | Fixed Lens: F1.6<br>PT Lens: F1.6   |
| FOV                          | Fixed Lens: Horizontal FOV: 82.3°, Vertical FOV: 44.7°, Diagonal FOV: 97.4°<br>PT Lens: Horizontal FOV: 51.8°, Vertical FOV: 28.2°, Diagonal FOV: 60.4° |
| Illuminator                  |   |
| Supplementary Light          | Six High-Power Spotlights and Infrared Lights   |
| Supplementary Light Distance | Up to 30 m/100 ft (depending on environment)  |
| IR Wavelength                | 850nm   |
| Night Vision Mode            | Smart Mode, Full Color Mode, Black & White Mode   |
| Video                        |   |
| Video Encoding Format        | Fixed Lens: H.265, H.264<br>PT Lens: H.265, H.264   |
| Main Stream Resolution       | Fixed Lens: 2304 × 1296, 1920 × 1080, 1280 × 720<br>PT Lens: 2304 × 1296, 1920 × 1080, 1280 × 720   |
| Sub Stream Resolution        | Fixed Lens: 640 × 360<br>PT Lens: 640 × 360   |
| Frame Rate                   | Fixed Lens: 1-25fps (2304 × 1296 1-18fps), Default 18fps<br>PT Lens: 1-25fps (2304 × 1296 1-18fps), Default 18fps                                       |
| Bit Rate                     | Fixed Lens: 512kbps -- 4096kbps<br>PT Lens: 512kbps -- 4096kbps   |
| Bit Rate Control             | Fixed Lens: CBR, VBR<br>PT Lens: CBR, VBR   |
| Audio                        |   |
| Audio Encoding Format        | G.711A, G.711U, AAC   |
| Audio Sampling Rate          | 8 kHz   |
| Audio Communication          | Two-way Audio, Voice Input  |

# Specification

| Image               |  |
|---------------------|--|
| Image Enhancement   | DWDR, BLC, HLC, 3D DNR   |
| Privacy Mask        | 4 Areas  |
| Network             |  |
| Ethernet Port       | 1 RJ45, 10Mbps/100Mbps auto-negotiation Ethernet port  |
| ONVIF               | Support  |
| Protocols           | TCP/IP, UDP, ICMP, HTTP, HTTPS, DHCP, DNS, DDNS, RTP, RTSP, RTCP, NTP, ARP, WebSockets   |
| Web Browser         | Plug-in free live view: Chrome, Edge, Opera  |
| Pan&Tilt            |  |
| Pan Movement Range  | 0°--355°   |
| Tilt Movement Range | 0°--90°  |
| Preset              | 6  |
| Patrol              | Panoramic Patrol, Preset Patrol  |
| Wi-Fi               |  |
| Antenna             | Internal antenna   |
| Wireless Standard   | IEEE 802.11 b/g/n/ax   |
| Transmission Rate   | Up to 287Mbps  |
| Channel Width       | 20/40 MHz  |
| Modulation          | DSSS/OFDM/OFDMA  |
| Frequency Band      | 2.4GHz: 2412MHz-2472MHz(CH1-CH13)  |
| Transmit Power      | 2.4GHz: <0.1W(EIRP)  |
| Security            | 64/128-bit WEP, WPA/WPA2, WPA-PSK/WPA2-PSK, WPA3-SAE   |
| Alarm               |  |
| Smart Detection     | Both fixed lens and PT lens are supported motion detection, human detection, vehicle detection, line crossing Detection, intrusion detection |
| Smart Linkage       | Sound&light Alert, Dual-lens Linkage Tracking, 3D Positioning  |
| DIY Audio           | 3 Customized Audios  |

# Specification

| Interface           |  |
|---------------------|--|
| Audio Input         | Built-in MIC   |
| Audio Output        | Built-in Speaker   |
| Storage             | Built-in Micro SD Card Slot, Up to 512 GB  |
| Reset Button        | Support  |
| LED Indicator       | Dual Color(red & blue) LED Indicator   |
| General             |  |
| Power               | 12V DC,1A,Ø5.5mm&Ø2.1mm Power Plug   |
| Material            | Plastic  |
| Product Dimension   | 203mm x 122mm x 62mm(8.0" x 4.8" x 2.4")   |
| Package Dimension   | 240mm x 145mm x 193mm(9.4" x 5.7" x 7.6")  |
| Product Weight      | 527g(1.16lb)   |
| With Package Weight | 802g(1.77lb)   |
| Protection Level    | IP65   |
| Installation Method | Wall Mounting, Ceiling Mounting, Pole Mounting   |
| Certification       | CE, RoHS, FCC, RCM, UKCA   |
| Temperature         | Operating Temperature: -30°C ~ 60°C (-22°F ~ 140°F)<br>Storage Temperature: -40°C ~ 70°C (-40°F ~ 158°F)   |
| Humidity            | Operating Humidity: 10% ~ 95% RH (non-condensing)<br>Storage Humidity: 3% ~ 95% RH (non-condensing)  |
| Package Contents    | Camera<br>Power Adapter (cord length: 3m)<br>Installation Template<br>Mounting Bracket<br>Mounting Accessories Kit<br>Waterproof Kit<br>Quick Installation Guide |

## **SHENZHEN TENDA TECHNOLOGY CO.,LTD.**

Tenda Technology Bldg.Int' I E-City,  
#1001 Zhong Shan Yuan Rd.,Nanshan District,Shenzhen China.

E-mail: [support@tenda.com.cn](mailto:support@tenda.com.cn)  
Tel: +86-755-2765 7098  
Fax: +86-755-2765 7178

