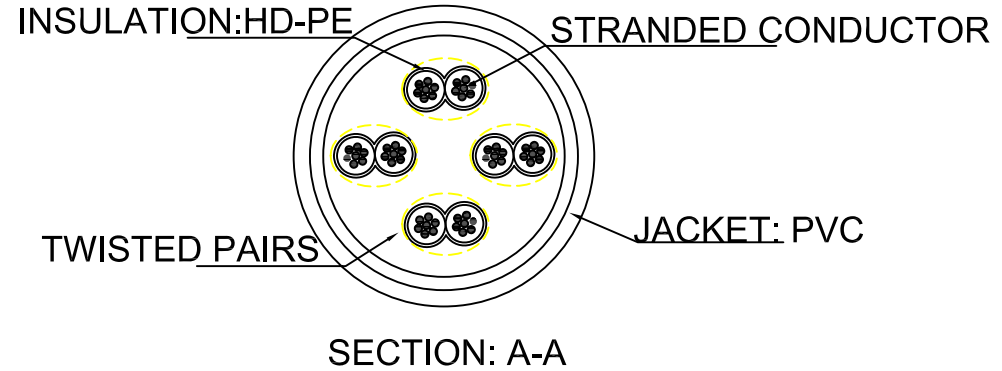


PRINT: VICENRAY CU CAT5E UTP CABLE TIA/EIA 568B 24AWG/4PRS

WIRING PIN ASSIGNMENT:

P1	EIA/TIA 568-B.2	P2
1	WH/OR	1
2	ORANGE	2
3	WH/GR	3
6	GREEN	6
4	BLUE	4
5	WH/BL	5
7	WH/BR	7
8	BROWN	8

TWISTED PAIRS



- NOTE:
- 100% OPEN/SHORT, MISSWIRING AND INTERMITTENCE TEST
 - RoHS COMPLIANT, ALL MATERIAL AND PROCESS MUST MEET THE REQUIREMENT OF RoHS
 - 100% PASS 300V HIGH VOLTAGE TEST

CAT5e UTP CABLE WHITE		
PART No.	LENGTH	TOLERANCE
	300	±15
	500	±15
	1000	±20
	2000	±25
	5000	±25
	10000	±30

X.± 1	X.°± 1
.X± 0.3	.X°±
.XX± 0.20	.XX°±
.XXX± 0.100	.XXX°±
UNITS:	mm

TEST DRAWINGS AND SPECIFICATIONS ARE THE PROPERTY OF WIDER CABLE AND SHALL NOT BE REPRODUCED COPIED OR CUED IN ANY MANNER WITHOUT THE PRIOR WIRTEN CONSENT OF WIDER CABLE.

ITEM	DESCRIPTION	Q'TY	UNIT
4	CONNECTOR 8P8C RJ45, 1μ GOLD PLATED AT CONTACT AREA	2	PCS
3	OVERMOLD INJECTION 60P PVC LIGHT GREY COLOR	A/R	
2	PRINTING VICENRAY CU CAT5E UTP CABLE TIA/EIA 568B 24AWG/4PRS	A/R	
1	RAW CABLE CAT5e UTP CABLE 24AWG 7/0.18BC*4P, GREY COLOR		



TITLE:
CAT5e UTP Patch Cable

APPD: STEVEN WU
CHKD: JENNY ZENG
DRAW: SIMON WU

RoHS COMPLIANT
DATE: 2015-06-26

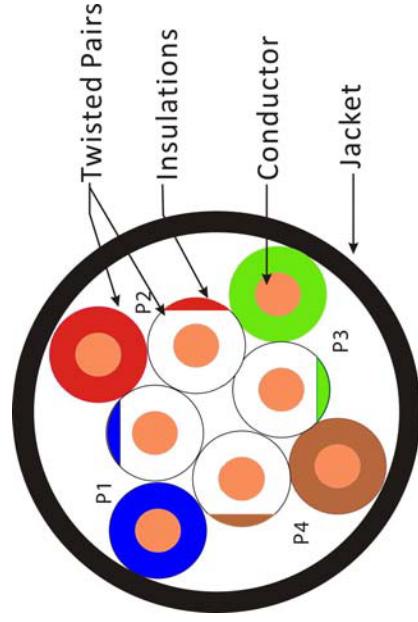
SCALE	SHEET	REV.
1:1	1/1	C

Product Specifications

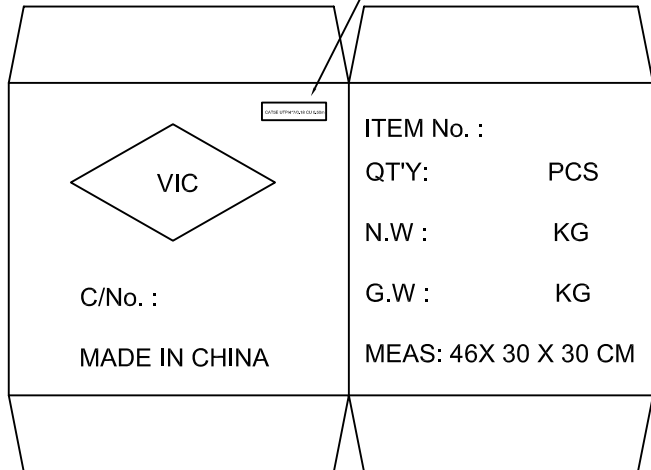
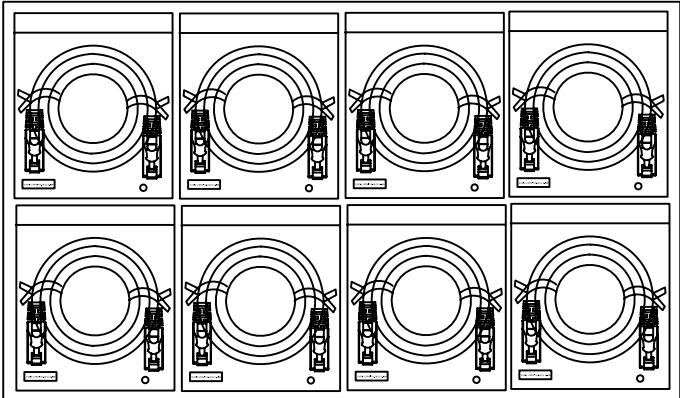
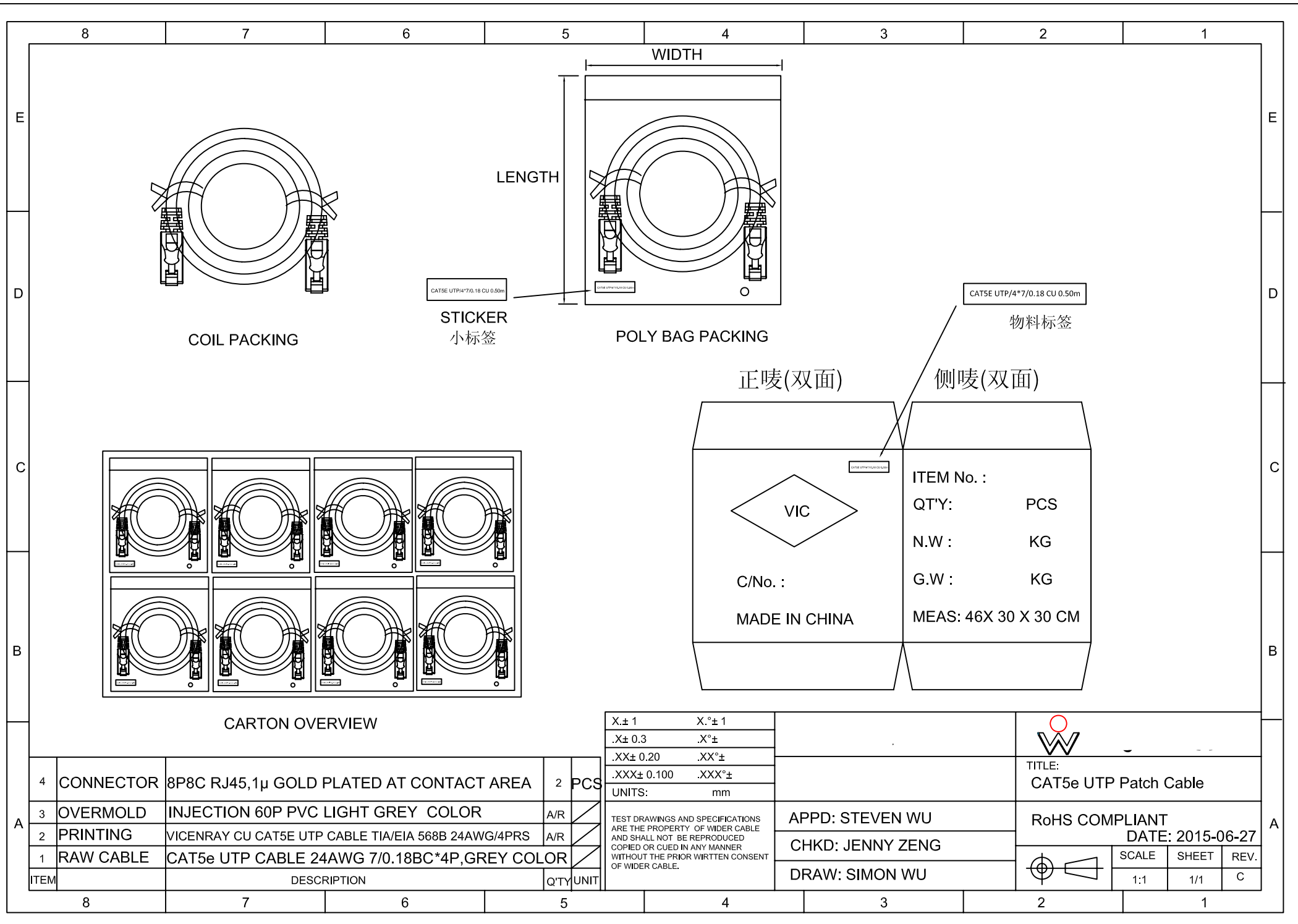
Construction & Material :

Item	Unit	Specification
Product		CAT.5E UTP 4P
Conductor	AWG	24
Size		
Number	P	4
Material		BC
Construction	pcs/mm	7/0.18±0.005mm
Diameter	mm	0.48
Material		HDPE
Min.thickness	mm	0.2
Avg.thickness	mm	0.21
Diameter(mm	0.92mm+/-0.05MM
		Blue×White/Blue Orange×White/Orange
		Green×White/Green Brown×White/Brown
Twisting		See Cross-Section
Cabling		See Cross-Section
Jacket		PVC
	mm	0.45
	mm	0.55
	mm	5.5±0.15
		LIGHT GREY 浅灰色
Marking		VICENRAY CU CAT5E UTP CABLE TIA/EIA 568B 24AWG/4PRS

Cross - Section View :



Drawing:	Jason.Liang	Spec No.:	
Checked:	Jenny.Jiang	Date:	
Approved:	Steven.Wu		



4	CONNECTOR	8P8C RJ45, 1μ GOLD PLATED AT CONTACT AREA	2	PCS
3	OVERMOLD	INJECTION 60P PVC LIGHT GREY COLOR	A/R	
2	PRINTING	VICENRAY CU CAT5E UTP CABLE TIA/EIA 568B 24AWG/4PRS	A/R	
1	RAW CABLE	CAT5e UTP CABLE 24AWG 7/0.18BC*4P, GREY COLOR		
ITEM	DESCRIPTION			QTY UNIT

X±1	X°±1
.X±0.3	.X°±
.XX±0.20	.XX°±
.XXX±0.100	.XXX°±
UNITS:	mm

TEST DRAWINGS AND SPECIFICATIONS ARE THE PROPERTY OF WIDER CABLE AND SHALL NOT BE REPRODUCED COPIED OR CUED IN ANY MANNER WITHOUT THE PRIOR WIRTEN CONSENT OF WIDER CABLE.

APPD: STEVEN WU
CHKD: JENNY ZENG
DRAW: SIMON WU

TITLE: CAT5e UTP Patch Cable			
RoHS COMPLIANT			
DATE: 2015-06-27			
	SCALE	SHEET	REV.
	1:1	1/1	C