

## EPON ONU FHR1100GZB



### Product Overview

FHR1100GZB pure data type ONU is a passive fiber network user product which was designed by our company for broadband access market basic on EPON technology. FHR1100GZB with the use of EPON local product (OLT) can provide user whole broadband access solution basic on EPON technology.

FHR1100GZB adopts ZTE high-performance xPON access chip, which has GPON/EPON/P2P three models and compliant to G.984, G.983 GPON Standard, 802.3-2005, CTC EPON device technology requirement. Hence it has good xPON Interoperability compatibility.

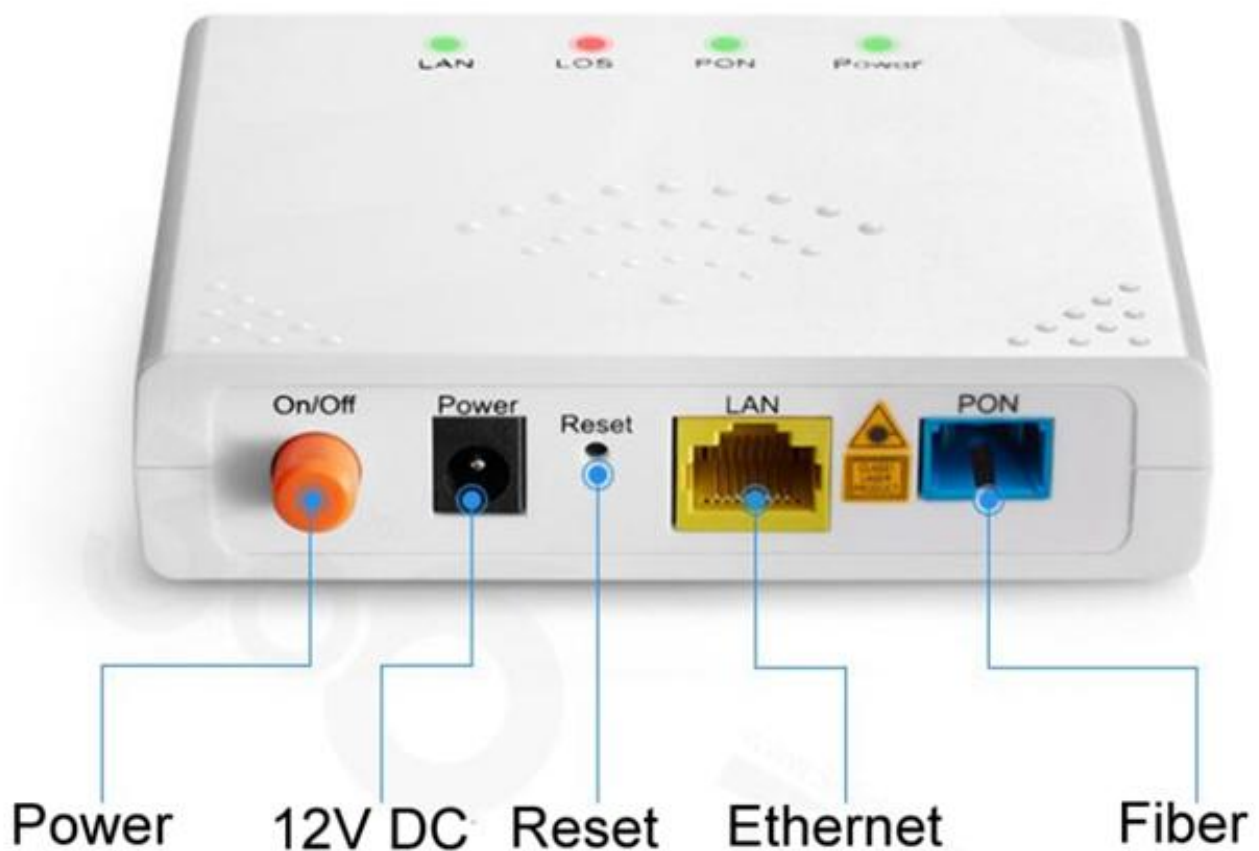
FHR1100GZB provides 1 GE self-adaption port, and it already realized interconnection and interworking between Industry mainstream telecommunication manufacture (HUAWEI / ZTE / FIBERHOME / ALCATEL-LUCENT), these interconnection and interworking constitute GIGA system, which can satisfy video and data access demand for FTTH / FTTO in two nets in one program.

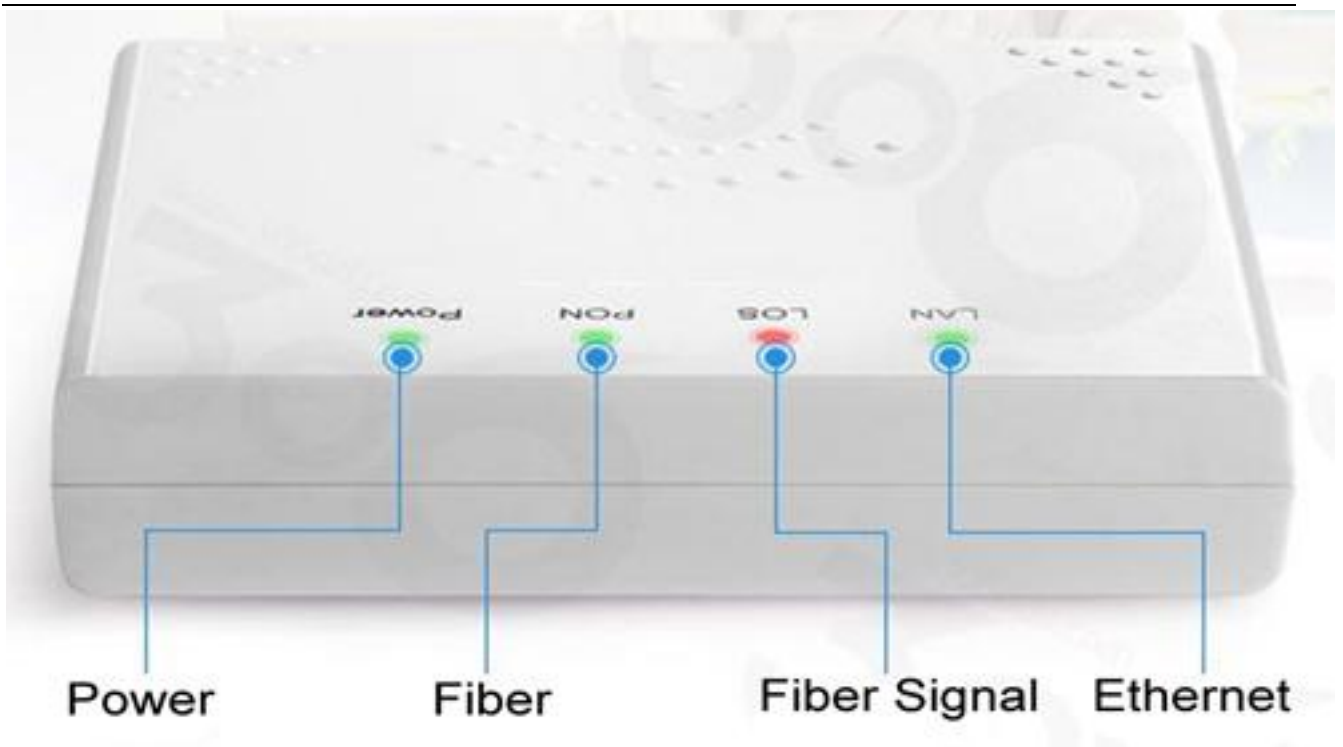
FHR1100GZB has high reliability , providing quality of service (QOS) guarantee, easy management, flexible upgrade dilatation and forming network main feature, each of its function and performance parameter are compliant to IEEE related suggestion, international related standard and industry standard

## Functional Feature

- ◇ Pure data type ONU
- ◇ Compliant to IEEE802.3ah
- ◇ Transmission distance 20KM
- ◇ Support data encryption
- ◇ Support data encryption
- ◇ Support broadcast storm restrain function
- ◇ Support loop detection function
- ◇ Support VLAN partition basic on port and protocol
- ◇ Support performance statistics function basic on port
- ◇ Support ACL, can dispose flexibly different assess data
- ◇ Support various flexible bandwidth allocation function
- ◇ Support single LLID collocation method, providing different QOS service grade
- ◇ Support three layer routing function
- ◇ Support software online upgrade
- ◇ Support EMS unified network management basic on SNMP protocol, easy to install and maintain
- ◇ Provide abundant fault alarm function, easy for fault diagnosis

## Device port and connection sketch map





Indicator			Instruction
1	LAN	RJ45 Port Working Condition Indicator	Light On: Port connection is normal but no data transmission Flick: Port connection is normal and has data transmission Light Off: Port without connection or connection abnormal
2	LOS	EPON Fiber Port Working Condition Indicator	Light On: No Fiber signal access or fiber signal abnormal Light Off: Fiber signal access normally
3	PON	ONT Register Indicator	Light On: Register to OLT equipment normally Flick: On processing to register to OLT equipment Light Off: Fail to register to OLT device or no fiber signal access
4	PWR	Power Indicator	Light On: Power On Light Off: Power Off


**Product Parameter**

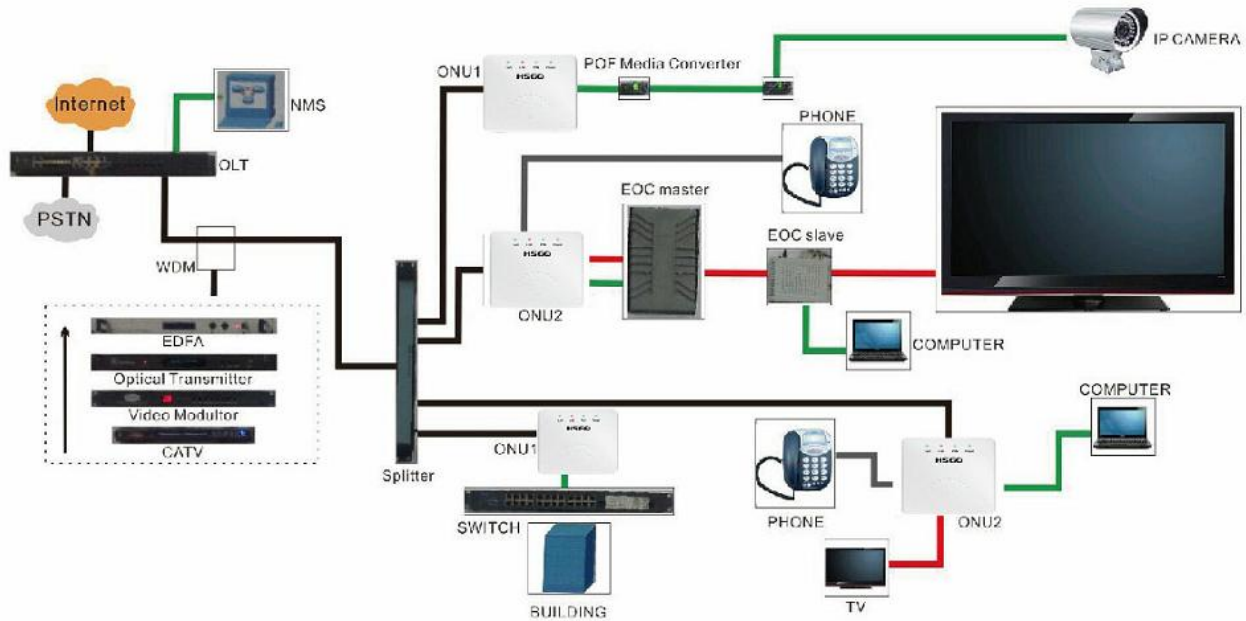
Item	Parameter	Spec
Interface Spec	PON Port	1 EPON fiber port Compliant to 1000BASE-PX20+ Upload and download balanced 1.25Gbps SC Single mode Simplex Fiber Port Support Max split ratio : 1 : 64 Transmission distance : 20KM
	User Port (LAN Port)	1 GE self-adaption Ethernet Port(10/100/1000M) Full duplex / Half duplex RJ45 port support adaptive cross or direct connection Transmission distance : 100M
	Power Supply	12V DC
Device Management	Management Style	Unified management by local side OLT through the OAM protocol, support SNMP, TELNET 、 local management
	Management Function	Condition monitoring, configuration management, alarm management, log management
Physic Feature	Shell	Plastic shell
	Power supply & 、 power dissipation	External 12V DC / 0.5A power supply Power dissipation < 3W
	Size & weight	Device size: 107mm(L)x 85mm(W)x26mm(H) Device N.W.: 0.26kg
	Environment:	Working temperature : -5 ~ 50℃ Storage temperature : -40 ~ 85℃ Working humidity : 10% ~ 90% Non condensation Storage humidity : 10% ~ 90% Non condensation

## Typical application

Typical access scheme : FTTH, FTTO, PON+EOC

Typical business : Broadband Internet access, IPTV, VOD, Video monitoring

## EPON Tri-networks Integration Project



## Ordering information

Product Name	Part Number	Product Description
SFU Type EPON ONU	<b>FHR1100GZB</b>	1 GE Ethernet port ; 1 1000Mbps EPON fiber port ; Plastic shell ; external power supply