



Inorax ST Cabinet Installation Guide

Note : Periodically check that all fasteners and components are securely tightened

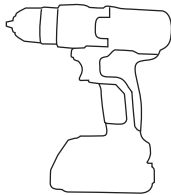
If the Cabinet was purchased assembled, it is the owner's responsibility, before insatalling any active Component the Cabinet for the first time, to make sure the Cabinet has been assembled and adjusted exactly as written in this manual, and any "Special Instructions" supplied and to make sure all fasteners and components are securely tightened.

Note: Images are only for simutaion. The images shown may not match your product's color.

Introduction

- ✓ This Owner's Manual is made for several different cabinet
- ✓ Some illustrations may vary slightly from the actual product
- ✓ Follow instructions completely.
- ✓ If the cabinet has any parts that are not described in this manual, look for separate "Special Instructions" that are supplied with the cabinet.
- ✓ Models may have different accessory items such as Perforated Front Door, Glass Door, Adapter etc.
- ✓ Please read through this entire manual before beginning assembly or maintenance

Tools Needed



Drill Screwdriver



Torx Screwdriver Bit T25



Phillips Screwdriver Bit

Parts Assembly List	CSN Series (16U-22U)		CSS Series (16U-22U)		CSN Series (26U-47U)		CSS Series (26U-47U)	
	W=600	W=800	W=600	W=800	W=600	W=800	W=600	W=800
M5x15 Phillips Countersunk	32	32	32	32	32	32	32	32
M5 X12 Torx External 6-lobe	24	24	20	20	28	44	24	40
M12X85 Adjustable Feet	4	4	4	4	4	4	4	4
Bottom Cover	1	1	1	1	1	1	1	1
Top Cover	1	1	1	1	1	1	1	1
Vertical Profile	4	4	4	4	4	4	4	4
Side Support Rails	0	0	0	0	2	2	2	2
W=800 Adapter	0	0	0	0	0	4	0	4
19" Mounting Rails	4	4	4	4	4	4	4	4
Solid Side Panel	2	2	2	2	2	2	2	2
Solid Rear Panel	1	1	0	0	1	1	0	0
Front Door	1	1	0	0	1	1	0	0
Perforated Front&Rear Door	0	0	2	2	0	0	2	2
Rear Door Holder	2	2	0	0	2	2	0	0
Rear Door Fixer	2	2	0	0	2	2	0	0
Track Link Part	4	4	4	4	4	4	4	4

Note : Use the parts list included in this manual to verify that all parts are accounted for before assembly. If any parts are missing, contact the retailer of this Cabinet for replacement parts

Assembling Adjustable feet on the Bottom Sheet



Assembling Vertical Profiles



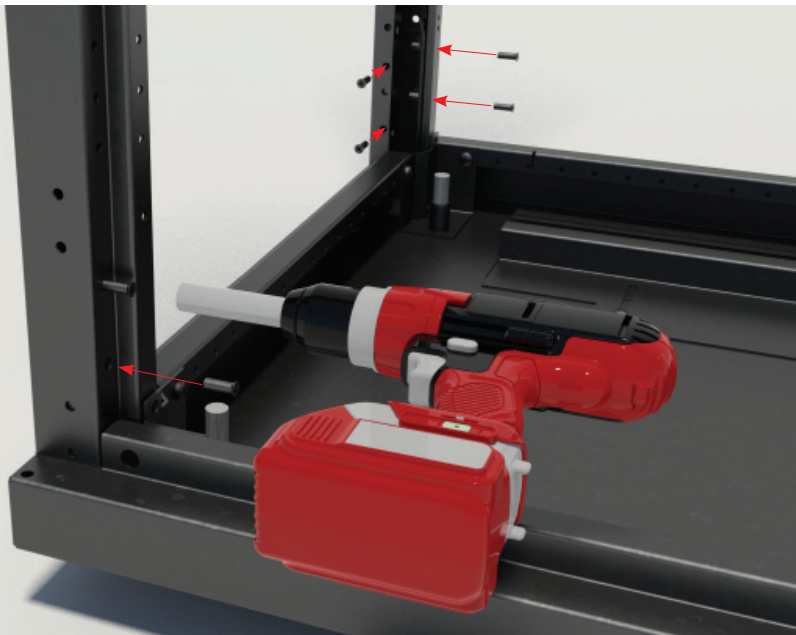
Please insert each Vertical Profile as shown picture.



Assembling Vertical Profiles

After inserting the Vertical Profiles please fix it from two side as shown on the picture with M5x12 Phillips Countersunk

Do not over-tighten. This will damage the bolt



Assembling Side Support Rails

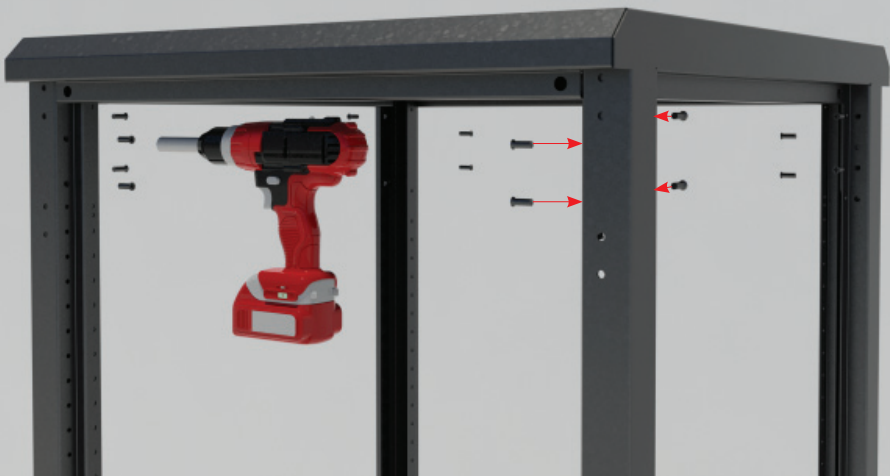
Fix Left and Right Supporting Rails with 4 M5 X12 Torx External (6-lobe)



Assembling Top Cover



After inserting Top Cover, please fix it from two side as shown on the picture with M5x12 Phillips Countersunk



Assembling Rear Door

Fix the Rear Door Holder
M5 X12 Torx External
(6-lobe)



Fix the Rear Door Fixer
M5 X12 Torx External
(6-lobe)

While you install Rear Panel make sure locks are unlocked.



Please first put lugs in hole which is on the bottom frame as shown on the picture



Assembling 19” Mounting Rails for 600 width

Fix the Mounting Rails with
M5 X12 Torx External (6-lobe)
Mounting rails have to be fixed
from 3 point on the cabinet



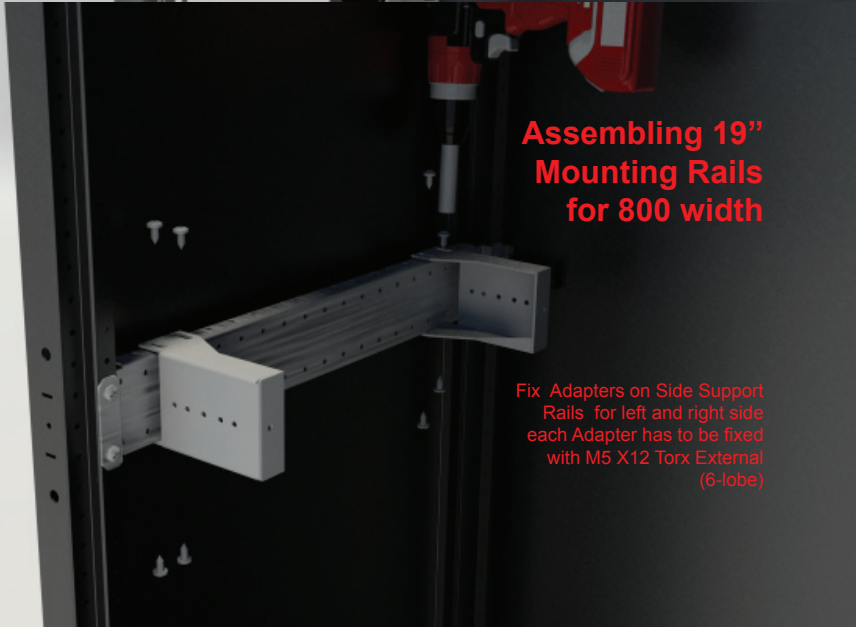
Fix the Mounting Rails to the Bottom Cover
with M5 X12 Torx External (6-lobe)



Fix the Mounting Rails to the Top Cover
with M5 X12 Torx External (6-lobe)



Assembling 19” Mounting Rails for 800 width

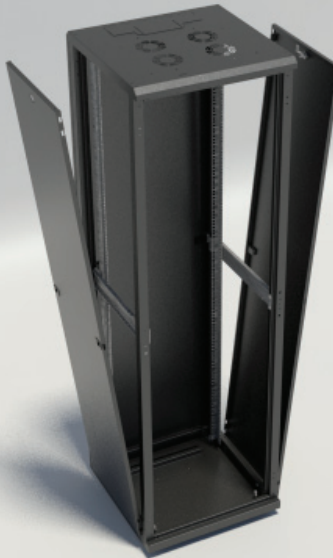


Fix Adapters on Side Support
Rails for left and right side
each Adapter has to be fixed
with M5 X12 Torx External
(6-lobe)



Fix the 19" Mounting Rails
on the adapters from 3 points
First one to the Adapter
Second one Bottom Cover and
Third point to the Top Cover

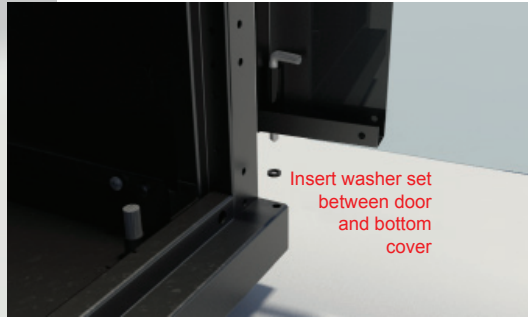
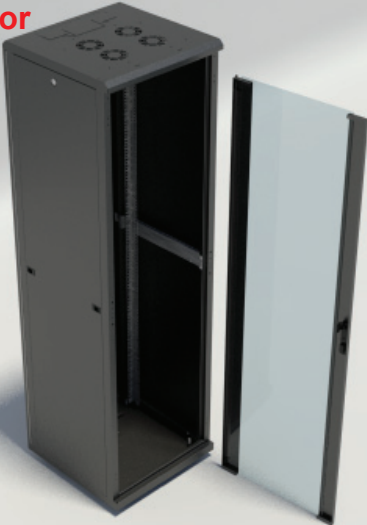
Assembling Side Panels



While you install side panel
make sure locks are unlocked.
Please first put lugs in hole
which is on the bottom frame
as shown next page



Assembling Front Door



Pull it down when you fix top side of the door





canovatesales



www.linkedin.com/company/canovate-group



www.facebook.com/canovategroup

Get connected : www.canovate.com/getconnected

© Copyright 2014 Canovate Group, The information contained herein is subject to change without notice. The only warranties for Canovate products and services are set forth in the express warranty statements accompanying such products and services. Nothing herein should be construed as constituting an additional warranty. Canovate shall not be liable for technical or editorial errors or omissions contained herein.

www.canovate.com | info@canovate.com | P. +90 216 484 2222

CANOVATE®
G R O U P
we make *IT* happen