

***Tenda***



All for better networking.

**TX3**

**AX1800 Dual Band Gigabit Wi-Fi 6 Router**

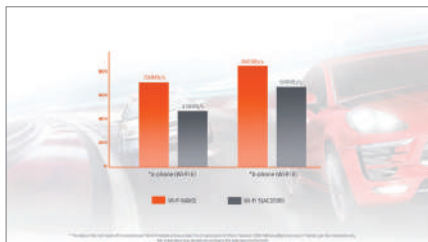


# TX3

## AX1800 Dual Band Gigabit Wi-Fi 6 Router

TX3 adopts the latest generation of Wi-Fi 6 with dual band concurrency rates of up to 1775 Mbps (2.4GHz: 574 Mbps, 5GHz: 1201 Mbps). With 1.5GHz high-performance quad-core processor units, the network load capacity has been greatly improved. The response you need is instantly quicker, and the long-term operation is more stable. With MU-MIMO+OFDMA technology, significantly improve network performance and efficiency, allows more devices to access the Internet at the same time, lowering latency, multiplayer online games and HD-videos are smoother. TX3 is the preferred router for smart home system.

# Main Features



## Wi-Fi 6 for Ultra-Fast Transmission Speed

TX3 adopts MU-MIMO + OFDMA to significantly improve network performance and efficiency, enabling it to support more client devices at the same time, wipe out latency, enhance multiplayer online games, and enjoy 4K videos more smoothly.



## Built-in Signal Enhancement Module

It adopts 5GHz dedicated powerful WLAN full-featured front-end module, equipped with integrated signal amplifier. The concentrated signal makes sure stronger and more stable Multi-story home WiFi coverage. You can enjoy best signal in any corner.



## 1.5GHz Quad Core Processor Provides Faster and More Stable Wi-Fi

With the 1.5GHz high-performance quad core processor, the network load capacity is comprehensively improved. Instant fast response making the operation more stable.



## BSS Coloring Reduces Interference and Improves Efficiency

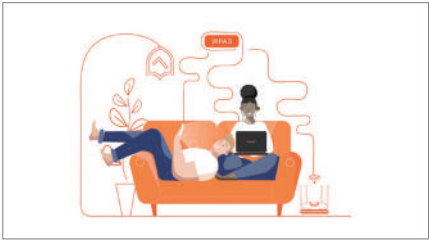
Supporting BSS coloring technology, this effectively alleviates co-frequency interference, improves spectrum utilization and communication efficiency.



## TWT Extends Battery Life of Connected Devices

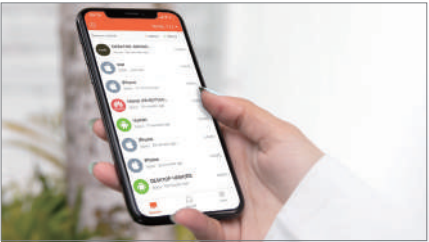
TWT (Target Wake-up Time technology) can effectively reduce the power consumption of terminal equipment and greatly extend its battery life.

# Main Features



## Enjoy Safer Surfing with The Next-Gen Security Protocol WPA3

The TX3 carries a new generation of WiFi security standard WPA3, which increases the difficulty of algorithmic and network password cracking, can prevent forced- attacks,violent cracking, and protect user privacy in open Wi-Fi networks.



## Remote Control Through The Tenda APP

Wi-Fi status can be controlled remotely through the Tenda APP, even while travelling, which facilitates the real-time monitoring of routers.



## Live The Present Greet The Future

The TX3 is designed to be compatible with smartphones & devices that support Wi-Fi standard in use. Enjoy the latest generation , Wi-Fi standard with the TX3 from Tenda.

# Specification

Hardware Specification	
Standards	IEEE802.3, IEEE802.3u, IEEE802.3ab
Interface	1*10/100/1000Mbps WAN port; 3*10/100/1000Mbps LAN ports;
Antenna	4*6dBi external antennas
Button	1* WPS, 1*Reset button
Power	Input: AC 100-240V~50/60Hz, 0.4A Output: DC 12V=1A
Dimensions	9.35*6.03*1.77 in (237.6*153.1*45mm)
LED Indicator	SYS*1

# Specification

Wireless Features	
Wireless Standards	IEEE 802.11ac/a/n/ax 5GHz IEEE 802.11b/g/n/ax 2.4GHz
Data Rate	5GHz: Up to 1201Mbps 2.4GHz: Up to 574Mbps
Frequency	Simultaneous dual band 2.4 & 5GHz
Transmit Power	CE: <20dBm(2.4G) <23dBm(5G)
Basic Features	SSID Broadcast: Enable/Disable Transmission Power: high, medium, low Beamforming/MU-MIMO
wireless Security	WPA-PSK,WPA2-PSK, WPA/WPA2-PSK;WPA3-SAE/WPA2-PSK; Wireless Security: Enable/Disable; WPS(WiFi Protected Set-up) fast encryption
Software Features	
Internet Connection Type	PPPoE, Dynamic IP, Static IP PPPoE(Russia), PPTP(Russia), L2TP(Russia),Unifi,Maxis,Maxis-special,Manual
Operating Mode	Wireless Router Mode Universal Repeater Mode WISP Mode
DHCP Server	DHCP Server DHCP Client List DHCP Reservation
Virtual Server	Port Forwarding DMZ Host UPnP
Security	Client Filter Parental Control(support black list and white list) Remote Web Management
Firewall	Forbid UDP flood attack Forbid TCP flood attack Forbid ICMP attack Forbid WAN PING from internet
DDNS	no-ip,Oray, 88ip,DynDNS

# Specification

## Software Features

VPN	PPTP server PPTP client L2TP client
Special Features	Smart Traffic Prioritisation PPPoE Username/password Clone Smart WiFi Schedule Smart LED on/off Tenda Cloud Tenda App Alexa
Others	Bandwidth Control Guest Network IPTV VLAN MAC Clone Static Routing System Log Backup & Restore configurations Firmware upgrade online Firmware upgradeable via browser Supports IPv6

## Others

Temperature	Operating Temperature: 0°C ~ 40°C; Storage Temperature: -40°C ~ 70°C.
Humidity	Operating Humidity: 10% ~ 90% RH non-condensing; Storage Humidity: 5% ~ 90% RH non-condensing.
Factory Default Settings	Default Access: tendawifi.com
Certificates	CE/FCC/RoHS
EIRP Power (Max)	2.400-2.4835GHz: 19.86dBm (EIRP); 5.150-5.250GHz: 22.96dBm (EIRP)
Package Contents	Wireless Router*1 Power Adapter *1 Install Guide*1 Ethernet Cable*1

## **SHENZHEN TENDA TECHNOLOGY CO.,LTD.**

Tenda Technology Bldg.Int' IE-City,  
# 1001 Zhong Shan Yuan Rd.,Nanshan District,Shenzhen China.

E-mail: [support@tenda.com.cn](mailto:support@tenda.com.cn)

Tel: +86-755-2765 7098

Fax: +86-755-2765 7178

PC: 518055

