

COAXIAL CABLES SPECIAL CABLES



Management Service

CERTIFICATE

The Certification Body
of TÜV SÜD Management Service GmbH
certifies that



Public Joint-Stock Company
“Odessa Cable Works “Odeskabel”
144, Nikolaevskaya doroga
65013 Odessa
Ukraine

has established and applies
a Quality Management System for

**Design, development and production of
cables, wires, cords and copper rod.**

An audit was performed, Report No. **707018423**.

Proof has been furnished that the requirements
according to

ISO 9001:2015

are fulfilled.

The certificate is valid from **2016-09-26** until **2019-09-25**.

Certificate Registration No.: **12 100 46297 TMS**.

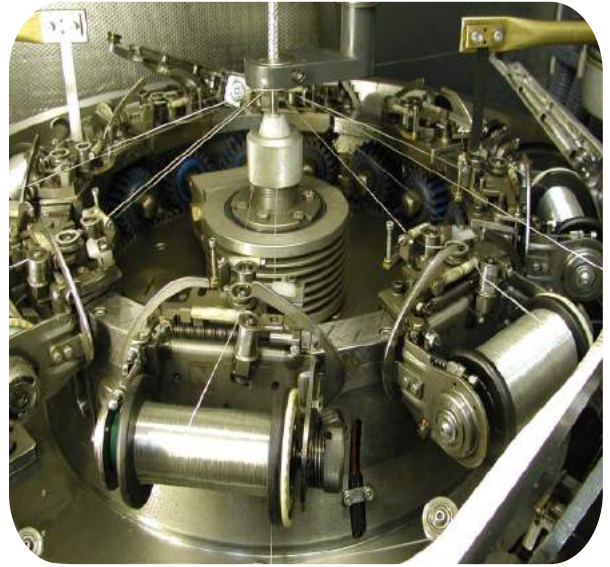
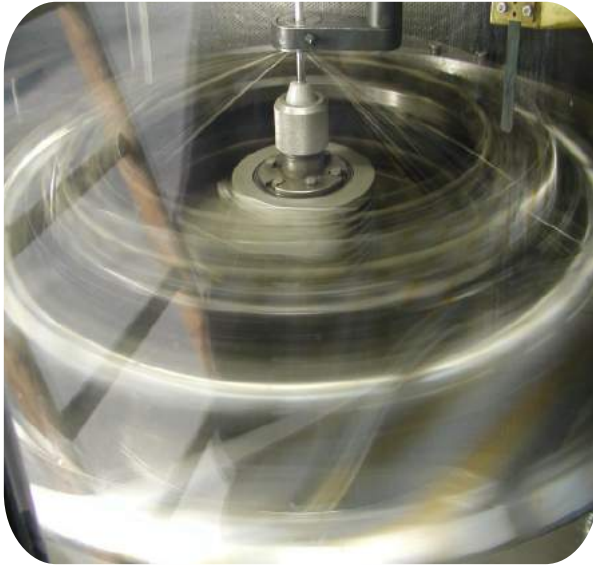
M. Wege

Product Compliance Management
Munich, 2016-09-27



ZERTIFIKAT ■ CERTIFICATE ■ 認 證 證 書 ■ CERTIFICADO ■ CERTIFICAT

Coaxial Cables Production



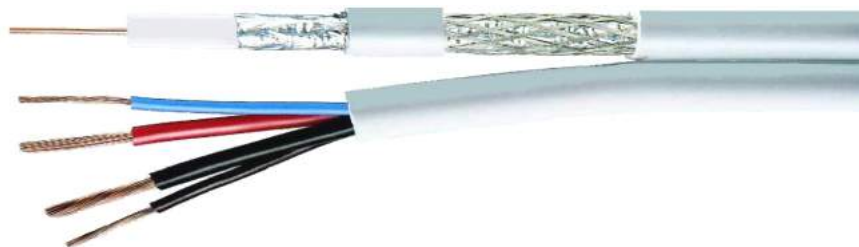


Composite Video, Security and Control Cables



Composite cables

Description	RG-59 +2×0,50 mm ²	F5967Bcu +2×0,75	F690Bvcu +2×0.75	RG-6 +2×0,75 mm ²	RG-6+2×1,5 mm ² +2×0,5 mm ²
-------------	----------------------------------	---------------------	---------------------	---------------------------------	--



Electric parameters

Impedance	Ohm	75+/-3	75+/-3	75+/-2	75+/-2	75+/-3	
Capacity	pF/m	54,5+/-3	56,8+/-3	67+/-1	54,5+/-3	51,5+/-3	
Velocity ratio	%	85	85	85	85	84	
DC resistance (20 °C)	Conductor	Ohm/km	35,5	35,5	22,5	22,5	22,5
	Outer shield	Ohm/km	24,6	31,0	28,0	24,0	13,9
Attenuation (20 °C)	1 MHz	dB/100 m	0,86	0,87	0,78	0,68	0,67
	5 MHz	dB/100 m	1,93	1,98	1,59	1,53	1,49
	10 MHz	dB/100 m	2,73	2,79	2,25	2,17	2,11
	50 MHz	dB/100 m	6,13	6,25	4,98	4,85	4,72
	100 MHz	dB/100 m	8,68	8,91	7,74	6,87	6,69
	200 MHz	dB/100 m	12,30	12,90	10,50	9,74	9,47
	300 MHz	dB/100 m	15,09	15,83	12,29	11,95	11,62
	470 MHz	dB/100 m	18,93	19,41	15,40	14,98	14,58
	862 MHz	dB/100 m	25,75	26,14	20,94	20,37	19,82
	1000 MHz	dB/100 m	27,77	28,92	21,17	21,97	21,37
Return loss at	30-470 MHz	dB	>23	>23	>23	>23	>23
	470-862 MHz	dB	>20	>20	>20	>20	>20
	862-2150 MHz	dB	>18	>18	>18	>18	>18
Screening efficiency	5-10 MHz	dB	>70	>55	>70	>75	>75
	10-30 MHz	dB	>75	>60	>75	>85	>85
	30-1000 MHz	dB	>85	>65	>85	>90	>90

Construction

Material conductor			Bare copper	Bare copper	Bare copper	Bare copper	Bare copper
Diameter conductor	∅	mm	0,80	0,80	1,02	1,02	1,02
Material dielectric			FHDPE	FHDPE	FHDPE	FHDPE	FHDPE
Diameter dielectric	∅	mm	3,7±0,15	3,7±0,15	4,6±0,15	4,3±0,15	4,6±0,15
Type of foil			-	Al/Pet/Al	Al/Pet/Al	Al/Pet/Al	Al/Pet/Al
Braiding material			Bare copper	AM (aluminium)	AM (aluminium)	Annealed tinned copper	Annealed tinned copper
Braid coverage		%	85	67	90	60	60
Power wires			Copper 2 x 0,50 mm ²	Copper 2 x 0,75 mm ²	Copper 2 x 0,75 mm ²	Copper 2 x 0,75 mm ²	Copper 2x0,50mm ² +2x1,50mm ²
Outer jacket			PVC	PVC	PVC	PVC	PVC
Diameter sheath	∅	mm	6,1/13,1	6,1/11	6,8/12	6,8/15,6	6,8/15,8
Min. Setting radius		mm	35	40	50	50	55
Код кабеля			4949	8896113	8896115	4950	4814
Colour			White Black	White Black	White Black	White Black	White Black
Packing			100, 200, 300 meters on coils				
Total weight		kg/km	60,2	61,0	68,0	76,3	125,0